



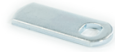






BALL DISPENSERS

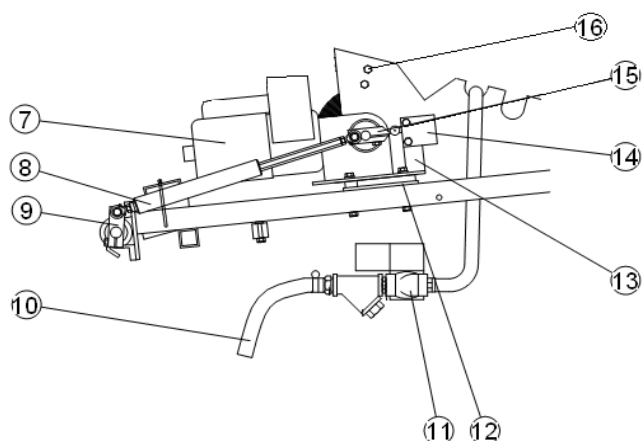
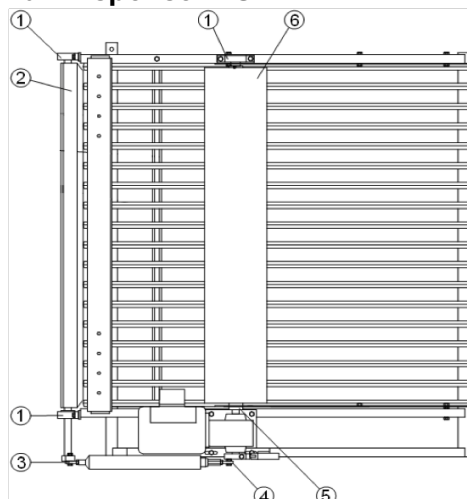
Common Parts for RS & Ultima

Part.no	Part name	Pos
OBM0800-CONNECT	BA16 Circuit board - with or without RSConnect	
101890	Twinlock with 4 keys	
101900	Lock with 2 keys	
101920	Spare Key	
101950	Deadbolt 05 (front and top lid)	
101960	Deadbolt 86, angled (electrical cabinet)	
OBA0000	Clamp ring,pivot pin	
OBM0002	Door RF, Token	
102225	Plastic, rain cover	
102000	Hood for ball chute (without hook)	
DJA0000	Hook, Ball chute	

Cone Top Ball Dispenser

DBM0000	Cone top RS-4	
117000	Cone top, RS8/12	
147000	Cone top, RS11/18	

Ball Dispenser RS



Part.no	Part name	Pos
104650	Plastic holder, cradle/brush	Pos. 1
184600	Ball cradle RS4/8/12/20/45	Pos. 2
104510	Linking spindle, L-H thread	Pos. 3
104500	Linking spindle, R-H thread	Pos. 4
104130	Flange, brush coupling complete	Pos. 5
104100	Roller brush RS4/8/12/20.. Cpl	Pos. 6
104300	Eccenter/lever for cradle	Pos. 9
104800	Water hose	Pos. 10
105300	Water valve 230 V	Pos. 11
DAM0002	Motor plate Dayton	Pos. 12
DAM0007	Holder inductive sensor	Pos. 13
DAA0004	Inductive sensor, limit NEW STYLE	Pos. 14
DAA0015	Connection cable	Pos. 14
DAM0000	Eccenter with cam,Dayton	Pos. 15



Ball Dispenser RS-4

Part.no	Part name	Pos
105601	Motor, 230 V, Dayton,complete for RS-4/8	Pos. 7
154400	Shock Absorber RS-4	Pos. 8
156000	ComplCollecting tray,RS-4	
OEA0040	Eccentric Lock Stainless	
153700	Grid, welded for RS-4	
184600	Ball cradle RS-4/8/12/20/45	
104100	Roller brush RS4/8/12/20.. Cpl	Pos. 6



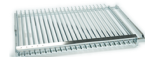
Ball Dispenser RS-8

105601	Motor, 230 V, Dayton,complete for RS-4/8	Pos. 7
184400	Shock absorber RS-8	Pos. 8
186000	Collecting tray RS/8/12/20/45	
OEA0040	Eccentric Lock Stainless	
183700	Grid RS8/12/20/45	
184600	Ball cradle RS-4/8/12/20/45	
104100	Roller brush RS4/8/12/20.. Cpl	Pos. 6

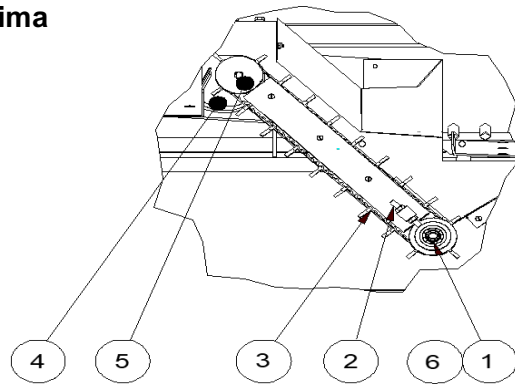


Ball Dispenser RS-11/18

114600	Ball cradle RS11/18	Pos. 2 on page 2
114100	Brush RS11/18 complete	Pos. 6
105602	Motor, 230 V, Dayton,complete for RS-11	Pos. 7
104400	Shock absorber RS8-RS11	Pos. 8
113900	Sprinkler arm, RS-11	
116700	Gas spring 250 N	
116000	Collecting tray RS11/18 complete	
OEA0040	Eccentric Lock Stainless	
101970	Deadbolt 71 (Top lid)	
113700	Grid RS 11/18	



Ball Dispenser Ultima

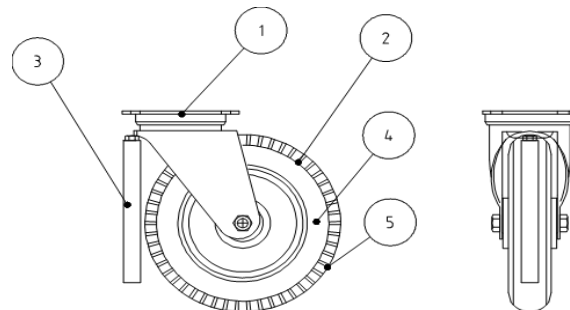


Part.no	Part name	Pos
930218	Photocell Ultima grid	
930304	Cable for photocell	
DJA0006	Cog belt 32T10/1000-V, from year 2000	Pos. 3
1000370	Ultima motor JKPM- 9ZFG 1/50	Pos 4
DJM0048	Gear drive, 47T/19-2	Pos. 5
DJM0053	Tension roller,complete	Pos. 6



BALL PICKERS

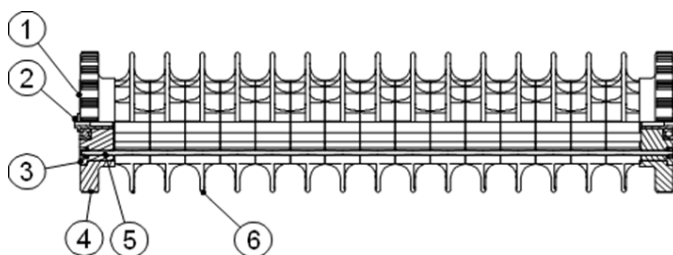
Light - Common parts



Part.no	Part name	Pos
OFM0012	Ball basket Plastic for Picker	
300400	Ball basket Steel for Picker	
PDA0000	Swivel castor air complete, Light	Pos. 1-5
970056	Ball guide, rubber tube L150	Pos. 3
970117	Ball guide, rubber tile	
960042	Through shaft, Light	Before year: 2003
970119	Vibration damper, upper	Before: 2002
970120	Vibration damper, lower	Before year: 2002



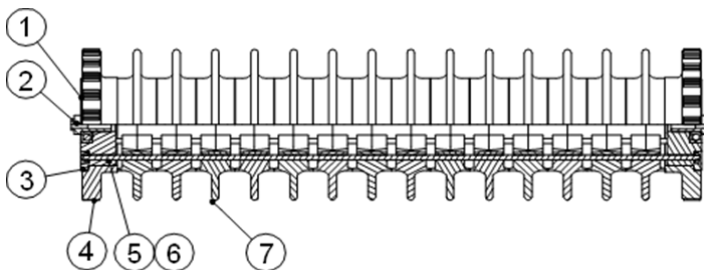
Light - Plastic



Part.no	Part name	Pos
PDM0093	Pick-up roller, Plastic Light	Pos. 1
PDM0058	Hollow axle, plastic light	Pos. 2 From year: 2004
OEA0007	M10x30 M6S FZB Bolt	For above hallow axle
PDM0095	End flange with hole +Large B	Pos. 3 From year: 2003
302040	End disc, black	Pos. 4
PDM0097	Assembly Rod, threded	Pos. 5 From year: 2003
312050	Disc, plastic picker	Pos. 6
PDM0077	Shaft instead of tube	Pos. 5



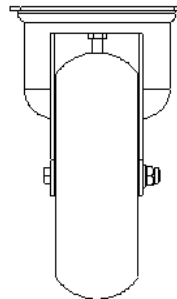
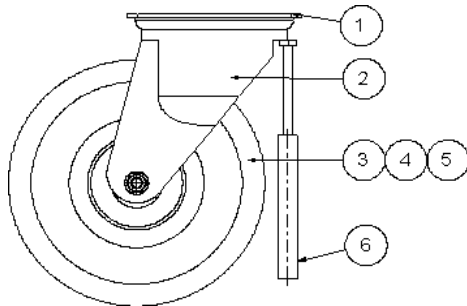
Light - Multiflex



Part.no	Part name	Pos
PDM0094	Pick-up roller, Multiflex Ligh	Pos. 1
PDM0057	Hollow axle, multi light	Pos. 2
OEA0007	M10x30 M6S FZB Bolt	For hollow axle above
PDM0095	End flange with hole +Large B	Pos. 3 From year: 2003
302040	End disc, black	Pos. 4
PDM0077	Shaft instead of tube	Pos. 5 From year: 2004
PDM0097	Assembly Rod	Pos. 6 From year: 2003
PBM0038	Multiflex disc PU356	Pos. 7



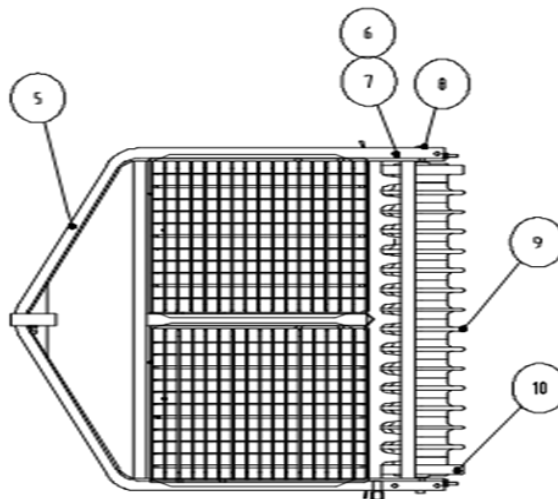
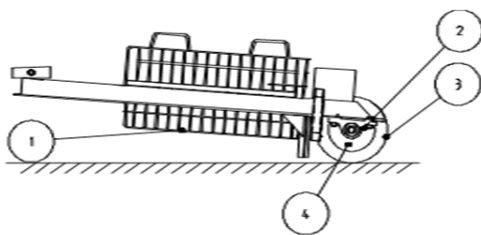
Heavy Duty - Common Parts



Part.no	Part name	Pos
OFM0012	Ball basket Plastic for Picker	
300400	Ball basket Steel for Picker	
300700	Chain for ball picker	
303200	Wheel incl. wheel mount	Pos. 1-6
970056	Ball guide, rubber tube L150	Pos. 6



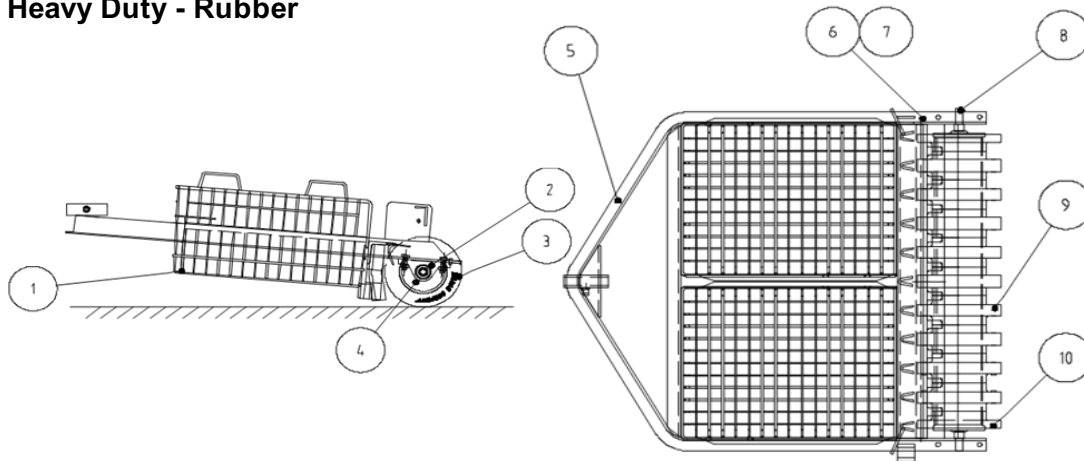
Heavy Duty - Multiflex



Part.no	Part name	Pos
PDM0094	Pick up roller Light for HD, <i>from year 2015</i>	
PBM0002	Pick-up roller, Multiflex HD, <i>before 2015</i>	Pos. 3
302100	UCP202 Ball Picker Block	Pos. 2
312030	Flange, pick-up roller, multi (with holes)	Pos. 4 From year: 2003
11400	Bolt M10 x25	Pos. 6
21020	Locknut M10	Pos. 7
302020	Through shaft	Pos. 8
PBM0038	Multiflex disc PU356	Pos. 9
302040	End disc, black	Pos. 10



Heavy Duty - Rubber

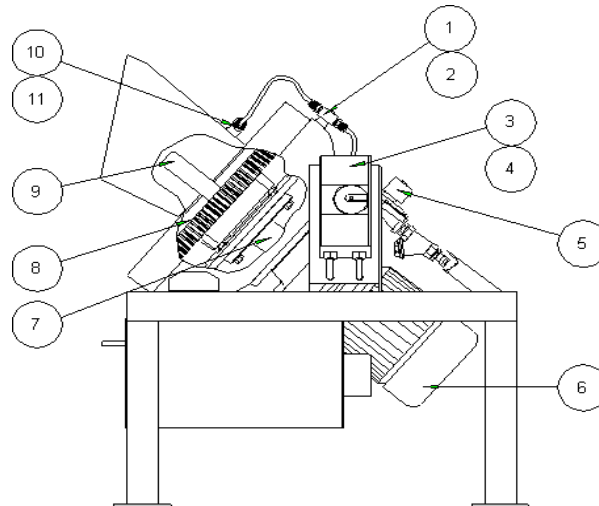


Part.no	Part name	Pos
302000	Pick-up roller, rubber, compl,	Pos. 3
302100	UCP202 Ball Picker Block	Pos. 2 Same as HD multi
302030	Flange -950101, RP	Pos. 4
11400	Bolt M10 x25	Pos. 6 Same as HD multi
21020	Locknut M10	Pos. 7 Same as HD multi
302020	Through shaft	Pos. 8 Same as HD multi
302050	Disc, rubber picker,black	Pos. 9
302040	End disc,black	Pos. 10 Same as HD multi
PCM0007	Brush strip, HD, Kit	Complete
301430	Brush strip	



CLEANING

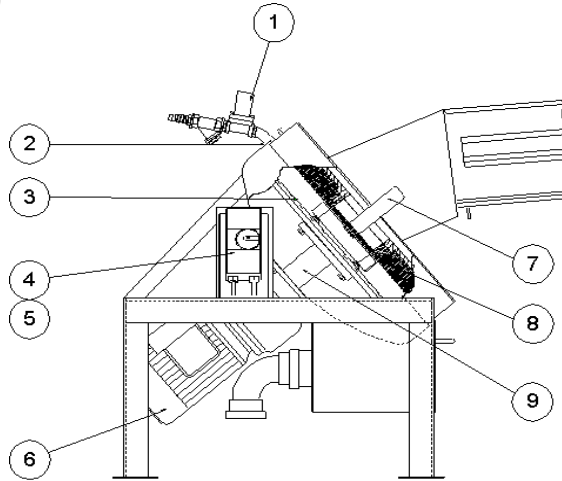
Ball Washer BT1300



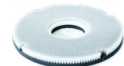
Part.no	Part name	Pos
WGA0001	T-Connection	Pos. 1
220993	Hose adapter 1/4"	Pos. 2 & 11
1000244	Motor protector for washer, complete EU	Pos. 4
105300	Water valve 230 V	Pos. 5
WGA0003	Motor 230V/50Hz 0,37kw	Pos. 6
WGM0013	Flange BT1300	Pos. 7
WGM0040	Brush, BT1300	Pos. 8
WGM0042	Agitator, BT1300 complete	Pos. 9
WAM0002	Extra Agitator, for BT1300	Pos. 9 Only the plastic part
WGM0015	Rubber base plate, BT1300	



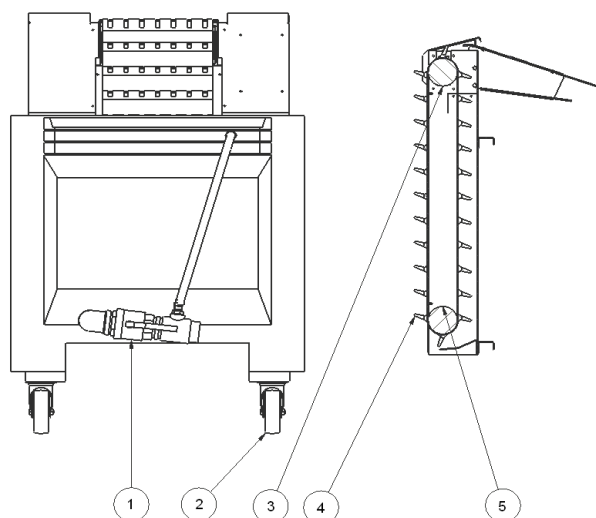
Ball Washer BT1950



Part.no	Part name	Pos
105300	Water valve 230 V	Pos. 1
220170	Mud plug incl collar 1/4"	Pos. 2
220650	Rubber base plate	Pos. 3
1000244	Motor protector for washer, complete EU	Pos. 4
200800	Motor 0,55 kW, 230V/50Hz,49rpm	Pos. 6
WBM0040	Agitator BT1950 complete	Pos. 7
WAM0002	Extra Agitator, for BT1950	Pos. 7 Only the plastic part
221100	Brush, complete	Pos. 8
220600	Flange BT1950	Pos. 9



Soaker 4000



Part.no	Part name	Pos
WFA0008	Ball valve 50	Pos. 1
WIA0000	Wheel solid	Pos. 2
WIM0039	Drum motor 80S-24V DC	Pos. 3
WIM0040	Idler 80S with Bracket fixing	Pos. 5
WIA0023	Elevator belt, Presoak with clip	Pos. 4
WIA0004	Control box Soaker 4000 complete	
WIM0023	Elevator belt, Presoak endless	Pos.4
OAE0191	Engine marketing RX3S	



BALL MANAGEMENT SYSTEMS

Elevator - Common Parts

Part.no	Part name	Pos
400520	Drum motor, 220V	
400610	Idler roller 113mm	
420250	Overfill protector, high level	
930332	Photo eye IRS8	
EAA0001	Drum motor 3x220V dia.113 ditch elevator	



Elevator 1.4m.

EGA0000 Elevator belt 1.4m (belt clip) 2860 mm



Elevator 1.8m.

410650 Elevator belt, 1.8 m (belt clip) 3500 mm

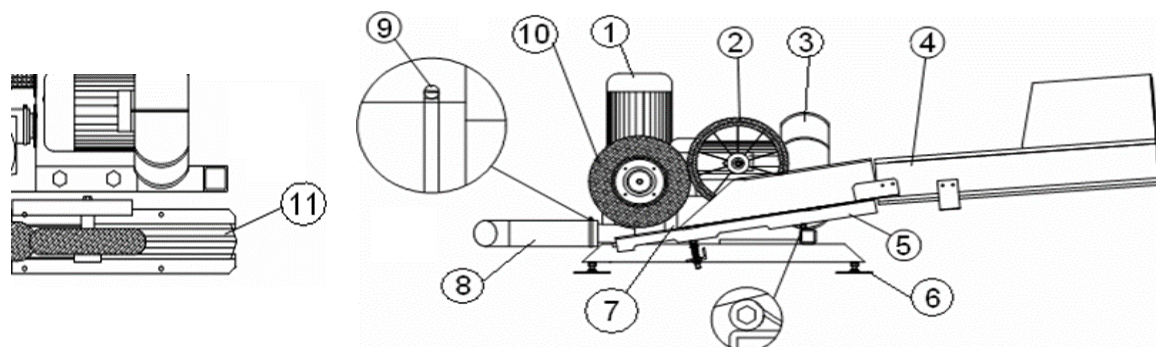
Elevator 2.1m.

EHA0000 Elevator belt 2,1m (belt clip) 4210 mm

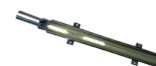
Elevator 2.3m.

420650 Elevator belt, 2.3 m (belt clip) 4500 mm

Blower - Common Parts



Part.no	Part name	Pos
803040	Feeding motor 42rpm	Pos. 1
803041	Feeding motor 47rpm	Pos. 1
970163	Guiding wheel	Pos. 2
BAA0001	Fan SC30 2,2Kw	Pos. 3
BAA0002	Fan SC30 3,0Kw	Pos. 3
970033	Ball chute,Blower R-H	Pos. 4
970178	Ball chute, blower	Pos. 5
930571	Photocell blower WTB4-3P3161	Pos. 7
BAM0116	Y-valve connector Complete	Pos. 8
1001951	Connector Pipe blower, new hose	
BAM0082	Connector Pipe blower, old hose	outgoing
BCA0001	Rubber Sleeve Manifold	

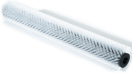
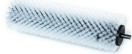


970157	Hose clamp	Pos. 9
970161	Feeding wheel,solid	Pos. 10
BAM0036	Protection,ball chut blower	Pos. 11
BDM0012	Ball stop, complete	
BDM0004	Ball stop rubber hose Kit	
1001582	New Hose for blower system per meter	
BDM0021	Rubber, ball stop	



Hopper

Part.no	Part name	Pos
HAA0000	Inductive sensor,limit	From year: 2002
HAM0023	Roller brush,NHopper	Not for H-50
104100	Roller brush Hopper 50 and RS4/8/12/20 cpl	For H-50



PAYMENT SOLUTIONS

Solo - Spare Parts

SOL0027	PC-Programmer SOLO - USB
SOL0003	SOLO-1 reader exkl. Door Card system, 1 bucket size
SOL0010_1	SOLO-2 reader exkl. Door Card system, 3 bucket size
108044	SOLO-kort Mifare, (only sold in 50-pack)(delivered with SOLO print on one side)

